

2014 eMeasure Flows  
Cover Page

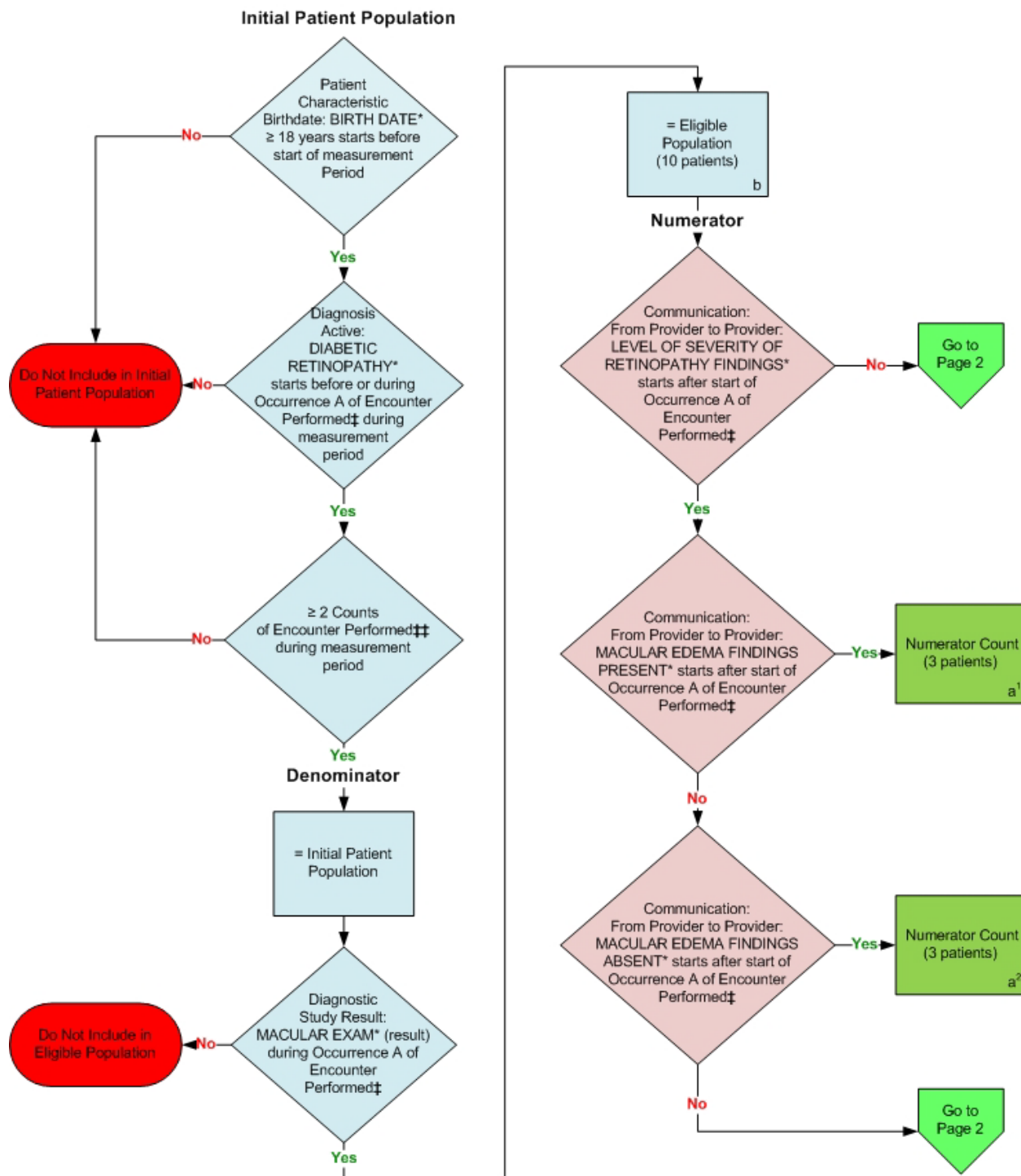
**For eligible professionals reporting EHR clinical quality measures for Meaningful Use (MU) only (Option #1) in 2014, the following must be included in the submitted file(s):**

- 1 – Rendering NPI and TIN on QRDA Category III files
- 2 – Payers for all eligible patients identified on QRDA Category III files
- 3 – All of the identifiers for the eMeasures the eligible professional or group practice intends to report must be included in the appropriate fields of the QRDA Category III files even if they do not have any eligible patients for those eMeasures
- 4 – Performance rate(s) (or a measure observation value) must be included in the QRDA Category III file for every eMeasure the eligible professional intended to report according to the performance rate (or measure observation) algorithms provided in each of the flows
- 5 – For every patient evaluated for the eMeasures also identify payer, race, ethnicity and sex.

**For eligible professionals and group practices reporting EHR clinical quality measures for Meaningful Use (MU) and the Physician Quality Reporting System (PQRS) (Option #2) in 2014, the following must be included in the submitted file(s):**

- 1 – Rendering NPI and TIN on the appropriate fields of the QRDA Category I or QRDA Category III files for eligible professionals reporting as *individuals* **OR** submission of all NPIs within the TIN when reporting as a *group practice*
- 2 – At least **one** Medicare Part B beneficiary that is eligible for at least one of the eMeasures either via QRDA Category I or III files
- 3 – Valid HIC# for Medicare beneficiaries on QRDA Category I files
- 4 – Payers for all eligible patients identified on QRDA Category I or III files
- 5 – All of the identifiers for the eMeasures the eligible professional or group practice intends to report must be included in the appropriate fields of the QRDA Category I or III files even if they do not have any eligible patients for those eMeasures
- 6 – Performance rate(s) (or a measure observation value) must be included in the QRDA Category III file for every eMeasure the eligible professional intended to report according to the performance rate (or measure observation) algorithms provided in each of the flows
- 7 – All of the detailed data pertaining to the eMeasures the eligible professional intends to report must be included in the patient-level QRDA Category I files so that the system may generate accurate performance rate(s) (or a measure observation value)
- 8 – For every patient evaluated for the eMeasures also identify payer, race, ethnicity and sex.

2014 eMeasure Flows  
eMeasure Identifier: 142  
NQF 0089: Diabetic Retinopathy: Communication with the Physician Managing Ongoing Diabetes Care



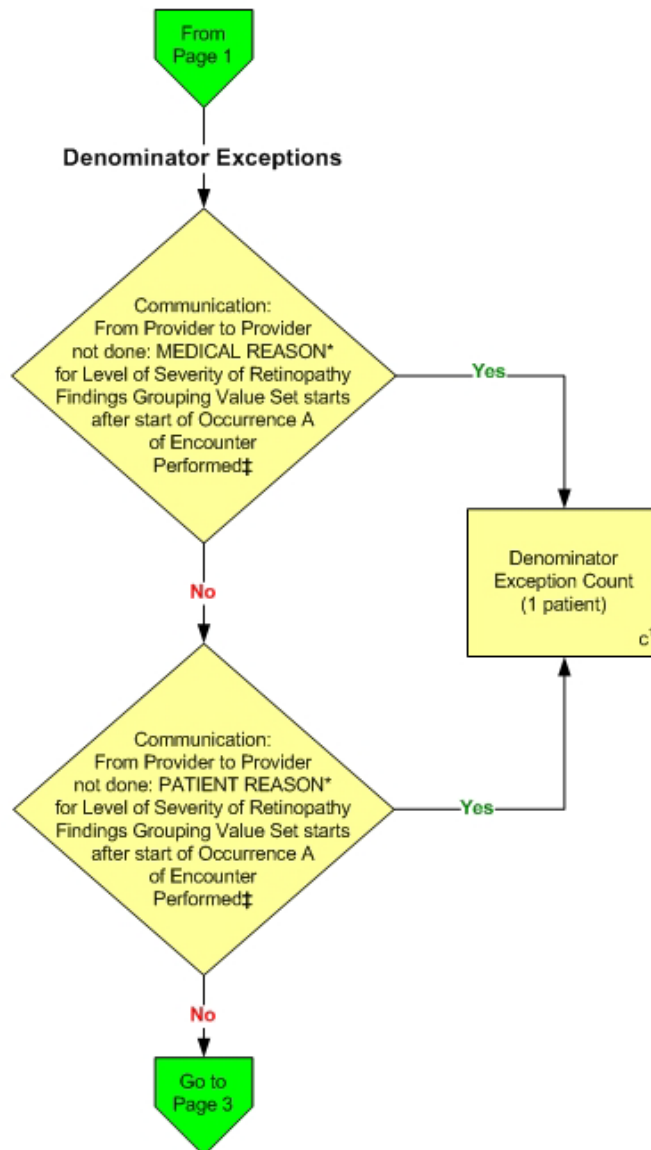
\*Please refer to the specific section of the eMeasure to identify the QDM data elements and associated value sets for use in reporting this eMeasure.

‡Appropriate encounters include; Ophthalmological Services, Care Services in Long-Term Residential Facility, Nursing Facility Visit, Office Visit, Outpatient Consultation, Face-to-Face Interaction.

‡‡Appropriate encounters include; Ophthalmological Services, Care Services in Long-Term Residential Facility, Nursing Facility Visit, Office Visit, Outpatient Consultation, Patient Provider Interaction.

2014 eMeasure Flows  
eMeasure Identifier: 142

NQF 0089: Diabetic Retinopathy: Communication with the Physician Managing Ongoing Diabetes Care

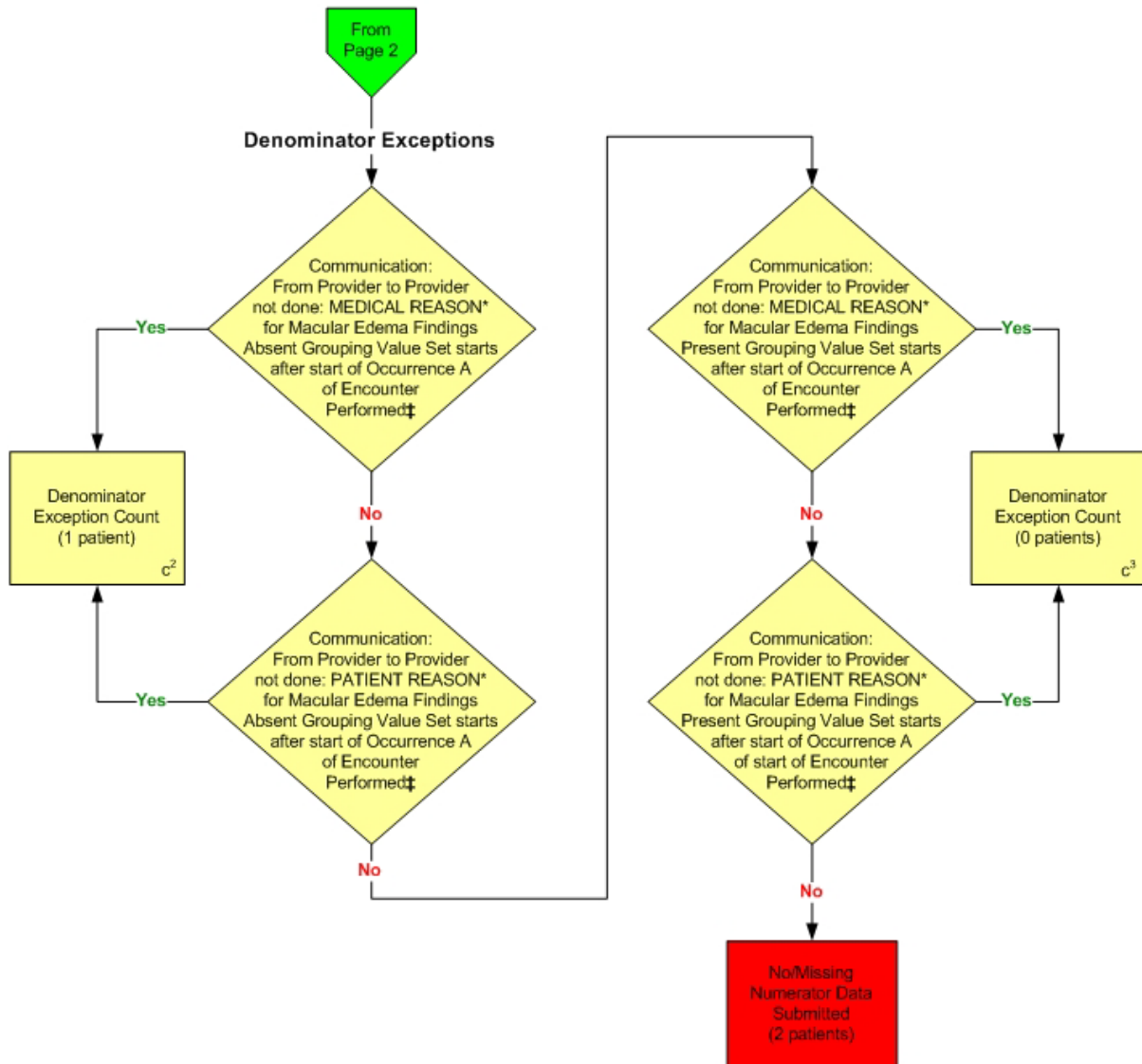


\*Please refer to the specific section of the eMeasure to identify the QDM data elements and associated value sets for use in reporting this eMeasure.

‡Appropriate encounters include; Ophthalmological Services, Care Services in Long-Term Residential Facility, Nursing Facility Visit, Office Visit, Outpatient Consultation, Face-to-Face Interaction.

2014 eMeasure Flows  
eMeasure Identifier: 142

NQF 0089: Diabetic Retinopathy: Communication with the Physician Managing Ongoing Diabetes Care



\*Please refer to the specific section of the eMeasure to identify the QDM data elements and associated value sets for use in reporting this eMeasure.  
‡ Appropriate encounters include; Ophthalmological Services, Care Services in Long-Term Residential Facility, Nursing Facility Visit, Office Visit, Outpatient Consultation, Face-to-Face Interaction.

**SAMPLE CALCULATION:**

**Performance Rate =**

$$\frac{\text{Numerator } (a^1 + a^2 = 6 \text{ patients})}{\text{Denominator } (b = 10 \text{ patients}) - \text{Denominator Exclusions (N/A)} - \text{Denominator Exceptions } (c^1 + c^2 + c^3 = 2 \text{ patients})} = 75.00\%$$

2014 eMeasure Flows  
eMeasure Identifier: 142

NQF 0089: Diabetic Retinopathy: Communication with the Physician Managing Ongoing  
Diabetes Care

Please refer to the specific section of the eMeasure to identify the QDM data elements and associated value sets for use in reporting this eMeasure.

1. Start Initial Patient Population
2. Check Patient Characteristic Birth date:
  - a. If the QDM data element, BIRTH DATE, greater than or equal to 18 years starts before start of measurement period, equals No, do not include in Initial Patient Population. Stop Processing.
  - b. If the QDM data element, BIRTH DATE, greater than or equal to 18 years starts before start of measurement period, equals Yes, proceed to check Diagnosis Active.
3. Check Diagnosis Active:
  - a. If the QDM data element, DIABETIC RETINOPATHY, starts before or during Occurrence A of Encounter Performed QDM data element, OPHTHALMOLOGICAL SERVICES, during measurement period equals No, proceed to check next Diagnosis Active.
  - b. If the QDM data element, DIABETIC RETINOPATHY, starts before or during Occurrence A of Encounter Performed QDM data element, OPHTHALMOLOGICAL SERVICES, during measurement period equals Yes, proceed to check Encounter Performed.
  - c. If the QDM data element, DIABETIC RETINOPATHY, starts before or during Occurrence A of Encounter Performed QDM data element, CARE SERVICES IN LONG-TERM RESIDENTIAL FACILITY, during measurement period equals No, proceed to check next Diagnosis Active.
  - d. If the QDM data element, DIABETIC RETINOPATHY, starts before or during Occurrence A of Encounter Performed QDM data element, CARE SERVICES IN LONG-TERM RESIDENTIAL FACILITY, during measurement period equals Yes, proceed to check Encounter Performed.
  - e. If the QDM data element, DIABETIC RETINOPATHY, starts before or during Occurrence A of Encounter Performed QDM data element, NURSING FACILITY VISIT, during measurement period equals No, proceed to check next Diagnosis Active.
  - f. If the QDM data element, DIABETIC RETINOPATHY, starts before or during Occurrence A of Encounter Performed QDM data element, NURSING FACILITY VISIT, during measurement period equals Yes, proceed to check Encounter Performed.
  - g. If the QDM data element, DIABETIC RETINOPATHY, starts before or during Occurrence A of Encounter Performed QDM data element, OFFICE VISIT, during measurement period equals No, proceed to check next Diagnosis Active.
  - h. If the QDM data element, DIABETIC RETINOPATHY, starts before or during Occurrence A of Encounter Performed QDM data element, OFFICE VISIT, during measurement period equals Yes, proceed to check Encounter Performed.
  - i. If the QDM data element, DIABETIC RETINOPATHY, starts before or during Occurrence A of Encounter Performed QDM data element, OUTPATIENT

- CONSULTATION, during measurement period equals No, proceed to check next Diagnosis Active.
- j. If the QDM data element, DIABETIC RETINOPATHY, starts before or during Occurrence A of Encounter Performed QDM data element, OUTPATIENT CONSULTATION, during measurement period equals Yes, proceed to check Encounter Performed.
  - k. If the QDM data element, DIABETIC RETINOPATHY, starts before or during Occurrence A of Encounter Performed QDM data element, FACE-TO-FACE INTERACTION, during measurement period equals No, do not include in Initial Patient Population. Stop Processing.
  - l. If the QDM data element, DIABETIC RETINOPATHY, starts before or during Occurrence A of Encounter Performed QDM data element, FACE-TO-FACE INTERACTION, during measurement period equals Yes, proceed to check Encounter Performed.
4. Check Encounter Performed: Total number of encounters must be greater than or equal to 2:
- a. If the QDM data element, OPHTHALMOLOGICAL SERVICES, during the measurement period, equals No, proceed to check next Encounter Performed.
  - b. If the QDM data element, OPHTHALMOLOGICAL SERVICES, during the measurement period, equals Yes, include in the Initial Patient Population and proceed to check for another Encounter Performed until total number of encounters are greater than or equal to 2.
  - c. If the QDM data element, CARE SERVICES IN LONG-TERM RESIDENTIAL FACILITY, during the measurement period, equals No, proceed to check next Encounter Performed.
  - d. If the QDM data element, CARE SERVICES IN LONG-TERM RESIDENTIAL FACILITY, during the measurement period, equals Yes, include in the Initial Patient Population and proceed to check for another Encounter Performed until total number of encounters are greater than or equal to 2.
  - e. If the QDM data element, NURSING FACILITY VISIT, during the measurement period, equals No, proceed to check next Encounter Performed.
  - f. If the QDM data element, NURSING FACILITY VISIT, during the measurement period, equals Yes, include in the Initial Patient Population and proceed to check for another Encounter Performed until total number of encounters are greater than or equal to 2.
  - g. If the QDM data element, OFFICE VISIT, during the measurement period, equals No, proceed to check next Encounter Performed.
  - h. If the QDM data element, OFFICE VISIT, during the measurement period, equals Yes, include in the Initial Patient Population and proceed to check for another Encounter Performed until total number of encounters are greater than or equal to 2.
  - i. If the QDM data element, OUTPATIENT CONSULTATION, during the measurement period, equals No, proceed to check next Encounter Performed.
  - j. If the QDM data element, OUTPATIENT CONSULTATION, during the measurement period, equals Yes, include in the Initial Patient Population and proceed to check for another Encounter Performed until total number of encounters are greater than or equal to 2.
  - k. If the QDM data element, PATIENT PROVIDER INTERACTION, during the measurement period, equals No, do not include in the Initial Patient Population. Stop Processing.
  - l. If the QDM data element, PATIENT PROVIDER INTERACTION, during the measurement period, equals Yes, include in the Initial Patient Population and

proceed to the Denominator if total number of encounters are greater than or equal to 2.

5. Start Denominator
  - a. Denominator equals the Initial Patient Population.
6. Check Diagnostic Study Result:
  - a. If Occurrence A of the QDM data element, MACULAR EXAM (result), during Occurrence A of Encounter Performed QDM data element, OPHTHALMOLOGICAL SERVICES, equals No, proceed to check next Diagnostic Study Result.
  - b. If Occurrence A of the QDM data element, MACULAR EXAM (result), during Occurrence A of Encounter Performed QDM data element, OPHTHALMOLOGICAL SERVICES, equals Yes, include in Eligible Population Count, which is represented by letter B in the sample calculation listed at the end of this document. Letter B equals 10 patients. Proceed to the Numerator.
  - c. If Occurrence A of the QDM data element, MACULAR EXAM (result), during Occurrence A of Encounter Performed QDM data element, CARE SERVICES IN LONG-TERM RESIDENTIAL FACILITY, equals No, proceed to check next Diagnostic Study Result.
  - d. If Occurrence A of the QDM data element, MACULAR EXAM (result), during Occurrence A of Encounter Performed QDM data element, CARE SERVICES IN LONG-TERM RESIDENTIAL FACILITY, equals Yes, include in Eligible Population Count, which is represented by letter B in the sample calculation listed at the end of this document. Letter B equals 10 patients. Proceed to the Numerator.
  - e. If Occurrence A of the QDM data element, MACULAR EXAM (result), during Occurrence A of Encounter Performed QDM data element, NURSING FACILITY VISIT, equals No, proceed to check next Diagnostic Study Result.
  - f. If Occurrence A of the QDM data element, MACULAR EXAM (result), during Occurrence A of Encounter Performed QDM data element, NURSING FACILITY VISIT, equals Yes, include in Eligible Population Count, which is represented by letter B in the sample calculation listed at the end of this document. Letter B equals 10 patients. Proceed to the Numerator.
  - g. If Occurrence A of the QDM data element, MACULAR EXAM (result), during Occurrence A of Encounter Performed QDM data element, OFFICE VISIT, equals No, proceed to check next Diagnostic Study Result.
  - h. If Occurrence A of the QDM data element, MACULAR EXAM (result), during Occurrence A of Encounter Performed QDM data element, OFFICE VISIT, equals Yes, include in Eligible Population Count, which is represented by letter B in the sample calculation listed at the end of this document. Letter B equals 10 patients. Proceed to the Numerator.
  - i. If Occurrence A of the QDM data element, MACULAR EXAM (result), during Occurrence A of Encounter Performed QDM data element, OUTPATIENT CONSULTATION, equals No, proceed to check next Diagnostic Study Result.
  - j. If Occurrence A of the QDM data element, MACULAR EXAM (result), during Occurrence A of Encounter Performed QDM data element, OUTPATIENT CONSULTATION, equals Yes, include in Eligible Population Count, which is represented by letter B in the sample calculation listed at the end of this document. Letter B equals 10 patients. Proceed to the Numerator.
  - k. If Occurrence A of the QDM data element, MACULAR EXAM (result), during Occurrence A of Encounter Performed QDM data element, FACE-TO FACE

INTERACTION, equals No, do not include in the Eligible Population Count. Stop Processing.

- I. If Occurrence A of the QDM data element, MACULAR EXAM (result), during Occurrence A of Encounter Performed QDM data element, FACE-TO FACE INTERACTION, equals Yes, include in Eligible Population Count, which is represented by letter B in the sample calculation listed at the end of this document. Letter B equals 10 patients. Proceed to the Numerator.

7. Start Numerator

8. Check Communication: From Provider to Provider:

- a. If the QDM data element, LEVEL OF SEVERITY OF RETINOPATHY FINDINGS, starts after start of Occurrence A of Encounter Performed QDM data element, OPHTHALMOLOGICAL SERVICES, equals No, proceed to check next Communication: From Provider to Provider.
- b. If the QDM data element, LEVEL OF SEVERITY OF RETINOPATHY FINDINGS, starts after start of Occurrence A of Encounter Performed QDM data element, OPHTHALMOLOGICAL SERVICES, equals Yes, proceed check next Communication: From Provider to Provider.
- c. If the QDM data element, LEVEL OF SEVERITY OF RETINOPATHY FINDINGS, starts after start of Occurrence A of Encounter Performed QDM data element, CARE SERVICES IN LONG-TERM RESIDENTIAL FACILITY, equals No, proceed to check next Communication: From Provider to Provider.
- d. If the QDM data element, LEVEL OF SEVERITY OF RETINOPATHY FINDINGS, starts after start of Occurrence A of Encounter Performed QDM data element, CARE SERVICES IN LONG-TERM RESIDENTIAL FACILITY, equals Yes, proceed to check next Communication: From Provider to Provider.
- e. If the QDM data element, LEVEL OF SEVERITY OF RETINOPATHY FINDINGS, starts after start of Occurrence A of Encounter Performed QDM data element, NURSING FACILITY VISIT, equals No, proceed to check next Communication: From Provider to Provider.
- f. If the QDM data element, LEVEL OF SEVERITY OF RETINOPATHY FINDINGS, starts after start of Occurrence A of Encounter Performed QDM data element, NURSING FACILITY VISIT, equals Yes, proceed to check next Communication: From Provider to Provider.
- g. If the QDM data element, LEVEL OF SEVERITY OF RETINOPATHY FINDINGS, starts after start of Occurrence A of Encounter Performed QDM data element, OFFICE VISIT, equals No, proceed to check next Communication: From Provider to Provider.
- h. If the QDM data element, LEVEL OF SEVERITY OF RETINOPATHY FINDINGS, starts after start of Occurrence A of Encounter Performed QDM data element, OFFICE VISIT, equals Yes, proceed to check next Communication: From Provider to Provider.
- i. If the QDM data element, LEVEL OF SEVERITY OF RETINOPATHY FINDINGS, starts after start of Occurrence A of Encounter Performed QDM data element, OUTPATIENT CONSULTATION, equals No, proceed to check next Communication: From Provider to Provider.
- j. If the QDM data element, LEVEL OF SEVERITY OF RETINOPATHY FINDINGS, starts after start of Occurrence A of Encounter Performed QDM data element, OUTPATIENT CONSULTATION, equals Yes, proceed to check next Communication: From Provider to Provider.
- k. If the QDM data element, LEVEL OF SEVERITY OF RETINOPATHY FINDINGS, starts after start of Occurrence A of Encounter Performed QDM data element,



FACE-TO FACE INTERACTION, equals No, do not include in the Numerator and proceed to Denominator Exceptions.

- I. If the QDM data element, LEVEL OF SEVERITY OF RETINOPATHY FINDINGS, starts after start of Occurrence A of Encounter Performed QDM data element, FACE-TO FACE INTERACTION, equals Yes, proceed to check next Communication: From Provider to Provider.
9. Check Communication: From Provider to Provider:
- a. If the QDM data element, MACULAR EDEMA FINDINGS PRESENT, starts after start of Occurrence A of Encounter Performed QDM data element, OPHTHALMOLOGICAL SERVICES, equals No, proceed to check next Communication: From Provider to Provider.
  - b. If the QDM data element, MACULAR EDEMA FINDINGS PRESENT, starts after start of Occurrence A of Encounter Performed QDM data element, OPHTHALMOLOGICAL SERVICES, equals Yes, include in Numerator Count, which is represented by letter A in the sample calculation listed at the end of this document. Letter A<sup>1</sup> equals 3 patients in the sample calculation. Stop Processing.
  - c. If the QDM data element, MACULAR EDEMA FINDINGS PRESENT, starts after start of Occurrence A of Encounter Performed QDM data element, CARE SERVICES IN LONG-TERM RESIDENTIAL FACILITY, equals No, proceed to check next Communication: From Provider to Provider.
  - d. If the QDM data element, MACULAR EDEMA FINDINGS PRESENT, starts after start of Occurrence A of Encounter Performed QDM data element, CARE SERVICES IN LONG-TERM RESIDENTIAL FACILITY, equals Yes, include in Numerator Count, which is represented by letter A in the sample calculation listed at the end of this document. Letter A<sup>1</sup> equals 3 patients in the sample calculation. Stop Processing.
  - e. If the QDM data element, MACULAR EDEMA FINDINGS PRESENT, starts after start of Occurrence A of Encounter Performed QDM data element, NURSING FACILITY VISIT, equals No, proceed to check next Communication: From Provider to Provider.
  - f. If the QDM data element, MACULAR EDEMA FINDINGS PRESENT, starts after start of Occurrence A of Encounter Performed QDM data element, NURSING FACILITY VISIT, equals Yes, include in Numerator Count, which is represented by letter A in the sample calculation listed at the end of this document. Letter A<sup>1</sup> equals 3 patients in the sample calculation. Stop Processing.
  - g. If the QDM data element, MACULAR EDEMA FINDINGS PRESENT, starts after start of Occurrence A of Encounter Performed QDM data element, OFFICE VISIT, equals No, proceed to check next Communication: From Provider to Provider.
  - h. If the QDM data element, MACULAR EDEMA FINDINGS PRESENT, starts after start of Occurrence A of Encounter Performed QDM data element, OFFICE VISIT, equals Yes, include in Numerator Count, which is represented by letter A in the sample calculation listed at the end of this document. Letter A<sup>1</sup> equals 3 patients in the sample calculation. Stop Processing.
  - i. If the QDM data element, MACULAR EDEMA FINDINGS PRESENT, starts after start of Occurrence A of Encounter Performed QDM data element, OUTPATIENT CONSULTATION, equals No, proceed to check next Communication: From Provider to Provider.
  - j. If the QDM data element, MACULAR EDEMA FINDINGS PRESENT, starts after start of Occurrence A of Encounter Performed QDM data element, OUTPATIENT CONSULTATION, equals Yes, include in Numerator Count, which is represented

- by letter A in the sample calculation listed at the end of this document. Letter A<sup>1</sup> equals 3 patients in the sample calculation. Stop Processing.
- k. If the QDM data element, MACULAR EDEMA FINDINGS PRESENT, starts after start of Occurrence A of Encounter Performed QDM data element, FACE-TO FACE INTERACTION, equals No, proceed check next Communication: From Provider to Provider.
  - l. If the QDM data element, MACULAR EDEMA FINDINGS PRESENT, starts after start of Occurrence A of Encounter Performed QDM data element, FACE-TO FACE INTERACTION, equals Yes, include in Numerator Count, which is represented by letter A in the sample calculation listed at the end of this document. Letter A<sup>1</sup> equals 3 patients in the sample calculation. Stop Processing.
10. Check Communication: From Provider to Provider:
- a. If the QDM data element, MACULAR EDEMA FINDINGS ABSENT, starts after start of Occurrence A of Encounter Performed QDM data element, OPHTHALMOLOGICAL SERVICES, equals No, proceed to check next Communication: From Provider to Provider.
  - b. If the QDM data element, MACULAR EDEMA FINDINGS ABSENT, starts after start of Occurrence A of Encounter Performed QDM data element, OPHTHALMOLOGICAL SERVICES, equals Yes, include in Numerator Count, which is represented by letter A in the sample calculation listed at the end of this document. Letter A<sup>2</sup> equals 3 patients in the sample calculation. Stop Processing.
  - c. If the QDM data element, MACULAR EDEMA FINDINGS ABSENT, starts after start of Occurrence A of Encounter Performed QDM data element, CARE SERVICES IN LONG-TERM RESIDENTIAL FACILITY, equals No, proceed to check next Communication: From Provider to Provider.
  - d. If the QDM data element, MACULAR EDEMA FINDINGS ABSENT, starts after start of Occurrence A of Encounter Performed QDM data element, CARE SERVICES IN LONG-TERM RESIDENTIAL FACILITY, equals Yes, include in Numerator Count, which is represented by letter A in the sample calculation listed at the end of this document. Letter A<sup>2</sup> equals 3 patients in the sample calculation. Stop Processing.
  - e. If the QDM data element, MACULAR EDEMA FINDINGS ABSENT, starts after start of Occurrence A of Encounter Performed QDM data element, NURSING FACILITY VISIT, equals No, proceed to check next Communication: From Provider to Provider.
  - f. If the QDM data element, MACULAR EDEMA FINDINGS ABSENT, starts after start of Occurrence A of Encounter Performed QDM data element, NURSING FACILITY VISIT, equals Yes, include in Numerator Count, which is represented by letter A in the sample calculation listed at the end of this document. Letter A<sup>2</sup> equals 3 patients in the sample calculation. Stop Processing.
  - g. If the QDM data element, MACULAR EDEMA FINDINGS ABSENT, starts after start of Occurrence A of Encounter Performed QDM data element, OFFICE VISIT, equals No, proceed to check next Communication: From Provider to Provider.
  - h. If the QDM data element, MACULAR EDEMA FINDINGS ABSENT, starts after start of Occurrence A of Encounter Performed QDM data element, OFFICE VISIT, equals Yes, include in Numerator Count, which is represented by letter A in the sample calculation listed at the end of this document. Letter A<sup>2</sup> equals 3 patients in the sample calculation. Stop Processing.
  - i. If the QDM data element, MACULAR EDEMA FINDINGS ABSENT, starts after start of Occurrence A of Encounter Performed QDM data element, OUTPATIENT

- CONSULTATION, equals No, proceed to check next Communication: From Provider to Provider.
- j. If the QDM data element, MACULAR EDEMA FINDINGS ABSENT, starts after start of Occurrence A of Encounter Performed QDM data element, OUTPATIENT CONSULTATION, equals Yes, include in Numerator Count, which is represented by letter A in the sample calculation listed at the end of this document. Letter A<sup>2</sup> equals 3 patients in the sample calculation. Stop Processing.
  - k. If the QDM data element, MACULAR EDEMA FINDINGS ABSENT, starts after start of Occurrence A of Encounter Performed QDM data element, FACE-TO FACE INTERACTION, equals No, proceed to check Denominator Exceptions.
  - l. If the QDM data element, MACULAR EDEMA FINDINGS ABSENT, starts after start of Occurrence A of Encounter Performed QDM data element, FACE-TO FACE INTERACTION, equals Yes, include in Numerator Count, which is represented by letter A in the sample calculation listed at the end of this document. Letter A<sup>2</sup> equals 3 patients in the sample calculation. Stop Processing.
11. Check Denominator Exceptions
12. Check Communication: From Provider to Provider Not Done:
- a. If the QDM data element, MEDICAL REASON, for Level of Severity of Retinopathy Findings Grouping Value Set, starts after start of Occurrence A of Encounter Performed QDM data element, OPHTHALMOLOGICAL SERVICES, equals No, proceed to check next Communication: From Provider to Provider Not Done.
  - b. If the QDM data element, MEDICAL REASON, for Level of Severity of Retinopathy Findings Grouping Value Set, starts after start of Occurrence A of Encounter Performed QDM data element, OPHTHALMOLOGICAL SERVICES, equals Yes, include in Denominator Exclusion Count, which is represented by letter C in the sample calculation listed at the end of this document. Letter C<sup>1</sup> equals 1 patient. Stop Processing
  - c. If the QDM data element, MEDICAL REASON, for Level of Severity of Retinopathy Findings Grouping Value Set, starts after start of Occurrence A of Encounter Performed QDM data element, CARE SERVICES IN LONG-TERM RESIDENTIAL FACILITY, equals No, proceed to check next Communication: From Provider to Provider Not Done.
  - d. If the QDM data element, MEDICAL REASON, for Level of Severity of Retinopathy Findings Grouping Value Set, starts after start of Occurrence A of Encounter Performed QDM data element, CARE SERVICES IN LONG-TERM RESIDENTIAL FACILITY, equals Yes, include in Denominator Exclusion Count, which is represented by letter C in the sample calculation listed at the end of this document. Letter C<sup>1</sup> equals 1 patient. Stop Processing.
  - e. If the QDM data element, MEDICAL REASON, for Level of Severity of Retinopathy Findings Grouping Value Set, starts after start of Occurrence A of Encounter Performed QDM data element, NURSING FACILITY VISIT, equals No, proceed to check next Communication: From Provider to Provider Not Done.
  - f. If the QDM data element, MEDICAL REASON, for Level of Severity of Retinopathy Findings Grouping Value Set, starts after start of Occurrence A of Encounter Performed QDM data element, NURSING FACILITY VISIT, equals Yes, include in Denominator Exclusion Count, which is represented by letter C in the sample calculation listed at the end of this document. Letter C<sup>1</sup> equals 1 patient. Stop Processing.
  - g. If the QDM data element, MEDICAL REASON, for Level of Severity of Retinopathy Findings Grouping Value Set, starts after start of Occurrence A of

- Encounter Performed QDM data element, OFFICE VISIT, equals No, proceed to check next Communication: From Provider to Provider Not Done.
- h. If the QDM data element, MEDICAL REASON, for Level of Severity of Retinopathy Findings Grouping Value Set, starts after start of Occurrence A of Encounter Performed QDM data element, OFFICE VISIT, equals Yes, include in Denominator Exclusion Count, which is represented by letter C in the sample calculation listed at the end of this document. Letter C<sup>1</sup> equals 1 patient. Stop Processing.
  - i. If the QDM data element, MEDICAL REASON, for Macular Exam Findings Grouping Value Set, starts after start of Occurrence A of Encounter Performed QDM data element, OUTPATIENT CONSULTATION, equals No, proceed to check next Communication: From Provider to Provider Not Done.
  - j. If the QDM data element, MEDICAL REASON, for Level of Severity of Retinopathy Findings Grouping Value Set, starts after start of Occurrence A of Encounter Performed QDM data element, OUTPATIENT CONSULTATION, equals Yes, include in Denominator Exclusion Count, which is represented by letter C in the sample calculation listed at the end of this document. Letter C<sup>1</sup> equals 1 patient. Stop Processing.
  - k. If the QDM data element, MEDICAL REASON, for Level of Severity of Retinopathy Findings Grouping Value Set, starts after start of Occurrence A of Encounter Performed QDM data element, FACE-TO FACE INTERACTION, equals No, proceed to check Line 13, check Communication: From Provider to Provider Not Done.
  - l. If the QDM data element, MEDICAL REASON, for Level of Severity of Retinopathy Findings Grouping Value Set, starts after start of Occurrence A of Encounter Performed QDM data element, FACE-TO FACE INTERACTION, equals Yes, include in Denominator Exclusion Count, which is represented by letter C in the sample calculation listed at the end of this document. Letter C<sup>1</sup> equals 1 patient. Stop Processing.
13. Check Communication: From Provider to Provider Not Done:
- a. If the QDM data element, PATIENT REASON, for Level of Severity of Retinopathy Findings Grouping Value Set, starts after start of Occurrence A of Encounter Performed QDM data element, OPHTHALMOLOGICAL SERVICES, equals No, proceed to check next Communication: From Provider to Provider Not Done.
  - b. If the QDM data element, PATIENT REASON, for Level of Severity of Retinopathy Findings Grouping Value Set, starts after start of Occurrence A of Encounter Performed QDM data element, OPHTHALMOLOGICAL SERVICES, equals Yes, include in Denominator Exclusion Count, which is represented by letter C in the sample calculation listed at the end of this document. Letter C<sup>1</sup> equals 1 patient. Stop Processing
  - c. If the QDM data element, PATIENT REASON, for Level of Severity of Retinopathy Findings Grouping Value Set, starts after start of Occurrence A of Encounter Performed QDM data element, CARE SERVICES IN LONG-TERM RESIDENTIAL FACILITY, equals No, proceed to check next Communication: From Provider to Provider Not Done.
  - d. If the QDM data element, PATIENT REASON, for Level of Severity of Retinopathy Findings Grouping Value Set, starts after start of Occurrence A of Encounter Performed QDM data element, CARE SERVICES IN LONG-TERM RESIDENTIAL FACILITY, equals Yes, include in Denominator Exclusion Count, which is represented by letter C in the sample calculation listed at the end of this document. Letter C<sup>1</sup> equals 1 patient. Stop Processing.

- e. If the QDM data element, PATIENT REASON, for Level of Severity of Retinopathy Findings Grouping Value Set, starts after start of Occurrence A of Encounter Performed QDM data element, NURSING FACILITY VISIT, equals No, proceed to check next Communication: From Provider to Provider Not Done.
  - f. If the QDM data element, PATIENT REASON, for Level of Severity of Retinopathy Findings Grouping Value Set, starts after start of Occurrence A of Encounter Performed QDM data element, NURSING FACILITY VISIT, equals Yes, include in Denominator Exclusion Count, which is represented by letter C in the sample calculation listed at the end of this document. Letter C<sup>1</sup> equals 1 patient. Stop Processing.
  - g. If the QDM data element, PATIENT REASON, for Level of Severity of Retinopathy Findings Grouping Value Set, starts after start of Occurrence A of Encounter Performed QDM data element, OFFICE VISIT, equals No, proceed to check next Communication: From Provider to Provider Not Done.
  - h. If the QDM data element, PATIENT REASON, for Macular Exam Findings Grouping Value Set, starts after start of Occurrence A of Encounter Performed QDM data element, OFFICE VISIT, equals Yes, include in Denominator Exclusion Count, which is represented by letter C in the sample calculation listed at the end of this document. Letter C<sup>1</sup> equals 1 patient. Stop Processing.
  - i. If the QDM data element, PATIENT REASON, for Level of Severity of Retinopathy Findings Grouping Value Set, starts after start of Occurrence A of Encounter Performed QDM data element, OUTPATIENT CONSULTATION, equals No, proceed to check next Communication: From Provider to Provider Not Done.
  - j. If the QDM data element, PATIENT REASON, for Level of Severity of Retinopathy Findings Grouping Value Set, starts after start of Occurrence A of Encounter Performed QDM data element, OUTPATIENT CONSULTATION, equals Yes, include in Denominator Exclusion Count, which is represented by letter C in the sample calculation listed at the end of this document. Letter C<sup>1</sup> equals 1 patient. Stop Processing.
  - k. If the QDM data element, PATIENT REASON, for Level of Severity of Retinopathy Findings Grouping Value Set, starts after start of Occurrence A of Encounter Performed QDM data element, FACE-TO FACE INTERACTION, equals No, proceed to check next Communication: From Provider to Provider Not Done.
  - l. If the QDM data element, PATIENT REASON, for Level of Severity of Retinopathy Findings Grouping Value Set, starts after start of Occurrence A of Encounter Performed QDM data element, FACE-TO FACE INTERACTION, equals Yes, include in Denominator Exclusion Count, which is represented by letter C in the sample calculation listed at the end of this document. Letter C<sup>1</sup> equals 1 patient. Stop Processing.
14. Check Communication: From Provider to Provider Not Done:
- a. If the QDM data element, MEDICAL REASON, for Macular Edema Findings Absent Grouping Value Set, starts after start of Occurrence A of Encounter Performed QDM data element, OPHTHALMOLOGICAL SERVICES, equals No, proceed to check next Communication: From Provider to Provider Not Done.
  - b. If the QDM data element, MEDICAL REASON, for Macular Edema Findings Absent Grouping Value Set, starts after start of Occurrence A of Encounter Performed QDM data element, OPHTHALMOLOGICAL SERVICES, equals Yes, include in Denominator Exclusion Count, which is represented by letter C in the sample calculation listed at the end of this document. Letter C<sup>2</sup> equals 1 patient. Stop Processing

- c. If the QDM data element, MEDICAL REASON, for Macular Edema Findings Absent Grouping Value Set, starts after start of Occurrence A of Encounter Performed QDM data element, CARE SERVICES IN LONG-TERM RESIDENTIAL FACILITY, equals No, proceed to check next Communication: From Provider to Provider Not Done.
- d. If the QDM data element, MEDICAL REASON, for Macular Edema Findings Absent Grouping Value Set, starts after start of Occurrence A of Encounter Performed QDM data element, CARE SERVICES IN LONG-TERM RESIDENTIAL FACILITY, equals Yes, include in Denominator Exclusion Count, which is represented by letter C in the sample calculation listed at the end of this document. Letter C<sup>2</sup> equals 1 patient. Stop Processing.
- e. If the QDM data element, MEDICAL REASON, for Macular Edema Findings Absent Grouping Value Set, starts after start of Occurrence A of Encounter Performed QDM data element, NURSING FACILITY VISIT, equals No, proceed to check next Communication: From Provider to Provider Not Done.
- f. If the QDM data element, MEDICAL REASON, for Macular Edema Findings Absent Grouping Value Set, starts after start of Occurrence A of Encounter Performed QDM data element, NURSING FACILITY VISIT, equals Yes, include in Denominator Exclusion Count, which is represented by letter C in the sample calculation listed at the end of this document. Letter C<sup>2</sup> equals 1 patient. Stop Processing.
- g. If the QDM data element, MEDICAL REASON, for Macular Edema Findings Absent Grouping Value Set, starts after start of Occurrence A of Encounter Performed QDM data element, OFFICE VISIT, equals No, proceed to check next Communication: From Provider to Provider Not Done.
- h. If the QDM data element, MEDICAL REASON, Macular Edema Findings Absent Grouping Value Set, starts after start of Occurrence A of Encounter Performed QDM data element, OFFICE VISIT, equals Yes, include in Denominator Exclusion Count, which is represented by letter C in the sample calculation listed at the end of this document. Letter C<sup>2</sup> equals 1 patient. Stop Processing.
- i. If the QDM data element, MEDICAL REASON, for Macular Edema Findings Absent Grouping Value Set, starts after start of Occurrence A of Encounter Performed QDM data element, OUTPATIENT CONSULTATION, equals No, proceed to check next Communication: From Provider to Provider Not Done.
- j. If the QDM data element, MEDICAL REASON, for Macular Edema Findings Absent Grouping Value Set, starts after start of Occurrence A of Encounter Performed QDM data element, OUTPATIENT CONSULTATION, equals Yes, include in Denominator Exclusion Count, which is represented by letter C in the sample calculation listed at the end of this document. Letter C<sup>2</sup> equals 1 patient. Stop Processing.
- k. If the QDM data element, MEDICAL REASON, for Macular Edema Findings Absent Grouping Value Set, starts after start of Occurrence A of Encounter Performed QDM data element, FACE-TO FACE INTERACTION, equals No, proceed to check next Communication: From Provider to Provider Not Done.
- l. If the QDM data element, MEDICAL REASON, Macular Edema Findings Absent Grouping Value Set, starts after start of Occurrence A of Encounter Performed QDM data element, FACE-TO FACE INTERACTION, equals Yes, include in Denominator Exclusion Count, which is represented by letter C in the sample calculation listed at the end of this document. Letter C<sup>2</sup> equals 1 patient. Stop Processing.

15. Check Communication: From Provider to Provider Not Done:

- a. If the QDM data element, PATIENT REASON, for Macular Edema Findings Absent Grouping Value Set, starts after start of Occurrence A of Encounter Performed QDM data element, OPHTHALMOLOGICAL SERVICES, equals No, proceed to check next Communication: From Provider to Provider Not Done.
- b. If the QDM data element, PATIENT REASON, for Macular Edema Findings Absent Grouping Value Set, starts after start of Occurrence A of Encounter Performed QDM data element, OPHTHALMOLOGICAL SERVICES, equals Yes, include in Denominator Exclusion Count, which is represented by letter C in the sample calculation listed at the end of this document. Letter C<sup>2</sup> equals 1 patient. Stop Processing
- c. If the QDM data element, PATIENT REASON, for Macular Edema Findings Absent Grouping Value Set, starts after start of Occurrence A of Encounter Performed QDM data element, CARE SERVICES IN LONG-TERM RESIDENTIAL FACILITY, equals No, proceed to check next Communication: From Provider to Provider Not Done.
- d. If the QDM data element, PATIENT REASON, for Macular Edema Findings Absent Grouping Value Set, starts after start of Occurrence A of Encounter Performed QDM data element, CARE SERVICES IN LONG-TERM RESIDENTIAL FACILITY, equals Yes, include in Denominator Exclusion Count, which is represented by letter C in the sample calculation listed at the end of this document. Letter C<sup>2</sup> equals 1 patient. Stop Processing.
- e. If the QDM data element, PATIENT REASON, for Macular Edema Findings Absent Grouping Value Set, starts after start of Occurrence A of Encounter Performed QDM data element, NURSING FACILITY VISIT, equals No, proceed to check next Communication: From Provider to Provider Not Done.
- f. If the QDM data element, PATIENT REASON, for Macular Edema Findings Absent Grouping Value Set, starts after start of Occurrence A of Encounter Performed QDM data element, NURSING FACILITY VISIT, equals Yes, include in Denominator Exclusion Count, which is represented by letter C in the sample calculation listed at the end of this document. Letter C<sup>2</sup> equals 1 patient. Stop Processing.
- g. If the QDM data element, PATIENT REASON, Macular Edema Findings Absent Grouping Value Set, starts after start of Occurrence A of Encounter Performed QDM data element, OFFICE VISIT, equals No, proceed to check next Communication: From Provider to Provider Not Done.
- h. If the QDM data element, PATIENT REASON, for Macular Exam Findings Absent Grouping Value Set, starts after start of Occurrence A of Encounter Performed QDM data element, OFFICE VISIT, equals Yes, include in Denominator Exclusion Count, which is represented by letter C in the sample calculation listed at the end of this document. Letter C<sup>2</sup> equals 1 patient. Stop Processing.
- i. If the QDM data element, PATIENT REASON, Macular Edema Findings Absent Grouping Value Set, starts after start of Occurrence A of Encounter Performed QDM data element, OUTPATIENT CONSULTATION, equals No, proceed to check next Communication: From Provider to Provider Not Done.
- j. If the QDM data element, PATIENT REASON, for Macular Edema Findings Absent Grouping Value Set, starts after start of Occurrence A of Encounter Performed QDM data element, OUTPATIENT CONSULTATION, equals Yes, include in Denominator Exclusion Count, which is represented by letter C in the sample calculation listed at the end of this document. Letter C<sup>2</sup> equals 1 patient. Stop Processing.
- k. If the QDM data element, PATIENT REASON, for Macular Edema Findings Absent Grouping Value Set, starts after start of Occurrence A of Encounter

- Performed QDM data element, FACE-TO FACE INTERACTION, equals No, proceed to check next Communication: From Provider to Provider Not Done.
- l. If the QDM data element, PATIENT REASON, for Macular Edema Findings Absent Grouping Value Set, starts after start of Occurrence A of Encounter Performed QDM data element, FACE-TO FACE INTERACTION, equals Yes, include in Denominator Exclusion Count, which is represented by letter C in the sample calculation listed at the end of this document. Letter C<sup>2</sup> equals 1 patient. Stop Processing.
16. Check Communication: From Provider to Provider Not Done:
- a. If the QDM data element, MEDICAL REASON, for Macular Edema Findings Present Grouping Value Set, starts after start of Occurrence A of Encounter Performed QDM data element, OPHTHALMOLOGICAL SERVICES, equals No, proceed to check next Communication: From Provider to Provider Not Done.
  - b. If the QDM data element, MEDICAL REASON, for Macular Edema Findings Present Grouping Value Set, starts after start of Occurrence A of Encounter Performed QDM data element, OPHTHALMOLOGICAL SERVICES, equals Yes, include in Denominator Exclusion Count, which is represented by letter C in the sample calculation listed at the end of this document. Letter C<sup>3</sup> equals 0 patients. Stop Processing
  - c. If the QDM data element, MEDICAL REASON, for Macular Edema Findings Present Grouping Value Set, starts after start of Occurrence A of Encounter Performed QDM data element, CARE SERVICES IN LONG-TERM RESIDENTIAL FACILITY, equals No, proceed to check next Communication: From Provider to Provider Not Done.
  - d. If the QDM data element, MEDICAL REASON, for Macular Edema Findings Present Grouping Value Set, starts after start of Occurrence A of Encounter Performed QDM data element, CARE SERVICES IN LONG-TERM RESIDENTIAL FACILITY, equals Yes, include in Denominator Exclusion Count, which is represented by letter C in the sample calculation listed at the end of this document. Letter C<sup>3</sup> equals 0 patients. Stop Processing.
  - e. If the QDM data element, MEDICAL REASON, for Macular Edema Findings Present Grouping Value Set, starts after start of Occurrence A of Encounter Performed QDM data element, NURSING FACILITY VISIT, equals No, proceed to check next Communication: From Provider to Provider Not Done.
  - f. If the QDM data element, MEDICAL REASON, for Macular Edema Findings Present Grouping Value Set, starts after start of Occurrence A of Encounter Performed QDM data element, NURSING FACILITY VISIT, equals Yes, include in Denominator Exclusion Count, which is represented by letter C in the sample calculation listed at the end of this document. Letter C<sup>3</sup> equals 0 patients. Stop Processing.
  - g. If the QDM data element, MEDICAL REASON, for Macular Edema Findings Present Grouping Value Set, starts after start of Occurrence A of Encounter Performed QDM data element, OFFICE VISIT, equals No, proceed to check next Communication: From Provider to Provider Not Done.
  - h. If the QDM data element, MEDICAL REASON, for Macular Edema Findings Present Grouping Value Set, starts after start of Occurrence A of Encounter Performed QDM data element, OFFICE VISIT, equals Yes, include in Denominator Exclusion Count, which is represented by letter C in the sample calculation listed at the end of this document. Letter C<sup>3</sup> equals 0 patients. Stop Processing.
  - i. If the QDM data element, MEDICAL REASON, for Macular Edema Findings Present Grouping Value Set, starts after start of Occurrence A of Encounter



- Performed QDM data element, OUTPATIENT CONSULTATION, equals No, proceed to check next Communication: From Provider to Provider Not Done.
  - j. If the QDM data element, MEDICAL REASON, for Macular Edema Findings Present Grouping Value Set, starts after start of Occurrence A of Encounter Performed QDM data element, OUTPATIENT CONSULTATION, equals Yes, include in Denominator Exclusion Count, which is represented by letter C in the sample calculation listed at the end of this document. Letter C<sup>3</sup> equals 0 patients. Stop Processing.
  - k. If the QDM data element, MEDICAL REASON, for Macular Edema Findings Present Grouping Value Set, starts after start of Occurrence A of Encounter Performed QDM data element, FACE-TO FACE INTERACTION, equals No, proceed to check next Communication: From Provider to Provider Not Done.
  - l. If the QDM data element, MEDICAL REASON, for Macular Edema Findings Present Grouping Value Set, starts after start of Occurrence A of Encounter Performed QDM data element, FACE-TO FACE INTERACTION, equals Yes, include in Denominator Exclusion Count, which is represented by letter C in the sample calculation listed at the end of this document. Letter C<sup>3</sup> equals 0 patients. Stop Processing.
- 17. Check Communication: From Provider to Provider Not Done:
  - a. If the QDM data element, PATIENT REASON, for Macular Edema Findings Present Grouping Value Set, starts after start of Occurrence A of Encounter Performed QDM data element, OPHTHALMOLOGICAL SERVICES, equals No, proceed to check next Communication: From Provider to Provider Not Done.
  - b. If the QDM data element, PATIENT REASON, for Macular Edema Findings Present Grouping Value Set, starts after start of Occurrence A of Encounter Performed QDM data element, OPHTHALMOLOGICAL SERVICES, equals Yes, include in Denominator Exclusion Count, which is represented by letter C in the sample calculation listed at the end of this document. Letter C<sup>3</sup> equals 0 patients. Stop Processing
  - c. If the QDM data element, PATIENT REASON, for Macular Edema Findings Present Grouping Value Set, starts after start of Occurrence A of Encounter Performed QDM data element, CARE SERVICES IN LONG-TERM RESIDENTIAL FACILITY, equals No, proceed to check next Communication: From Provider to Provider Not Done.
  - d. If the QDM data element, PATIENT REASON, for Macular Edema Findings Present Grouping Value Set, starts after start of Occurrence A of Encounter Performed QDM data element, CARE SERVICES IN LONG-TERM RESIDENTIAL FACILITY, equals Yes, include in Denominator Exclusion Count, which is represented by letter C in the sample calculation listed at the end of this document. Letter C<sup>3</sup> equals 0 patients. Stop Processing.
  - e. If the QDM data element, PATIENT REASON, for Macular Edema Findings Present Grouping Value Set, starts after start of Occurrence A of Encounter Performed QDM data element, NURSING FACILITY VISIT, equals No, proceed to check next Communication: From Provider to Provider Not Done.
  - f. If the QDM data element, PATIENT REASON, for Macular Edema Findings Present Grouping Value Set, starts after start of Occurrence A of Encounter Performed QDM data element, NURSING FACILITY VISIT, equals Yes, include in Denominator Exclusion Count, which is represented by letter C in the sample calculation listed at the end of this document. Letter C<sup>3</sup> equals 0 patients. Stop Processing.
  - g. If the QDM data element, PATIENT REASON, for Macular Edema Findings Present Grouping Value Set, starts after start of Occurrence A of Encounter

- Performed QDM data element, OFFICE VISIT, equals No, proceed to check next Communication: From Provider to Provider Not Done.
- h. If the QDM data element, PATIENT REASON, for Macular Edema Findings Present Grouping Value Set, starts after start of Occurrence A of Encounter Performed QDM data element, OFFICE VISIT, equals Yes, include in Denominator Exclusion Count, which is represented by letter C in the sample calculation listed at the end of this document. Letter C<sup>3</sup> equals 0 patients. Stop Processing.
  - i. If the QDM data element, PATIENT REASON, for Macular Edema Findings Present Grouping Value Set, starts after start of Occurrence A of Encounter Performed QDM data element, OUTPATIENT CONSULTATION, equals No, proceed to check next Communication: From Provider to Provider Not Done.
  - j. If the QDM data element, PATIENT REASON, for Macular Edema Findings Present Grouping Value Set, starts after start of Occurrence A of Encounter Performed QDM data element, OUTPATIENT CONSULTATION, equals Yes, include in Denominator Exclusion Count, which is represented by letter C in the sample calculation listed at the end of this document. Letter C<sup>3</sup> equals 0 patients. Stop Processing.
  - k. If the QDM data element, PATIENT REASON, for Macular Edema Findings Present Grouping Value Set, starts after start of Occurrence A of Encounter Performed QDM data element, FACE-TO FACE INTERACTION, equals No, include in the No/Missing Data Submitted. Stop Processing.
  - l. If the QDM data element, PATIENT REASON, for Macular Edema Findings Present Grouping Value Set, starts after start of Occurrence A of Encounter Performed QDM data element, FACE-TO FACE INTERACTION, equals Yes, include in Denominator Exclusion Count, which is represented by letter C in the sample calculation listed at the end of this document. Letter C<sup>3</sup> equals 0 patients. Stop Processing.

#### SAMPLE CALCULATION:

##### Performance Rate

Numerator ( $a^1 + a^2 = 6$  patients)

÷

Denominator ( $b = 10$  patients) – *Denominator Exclusions (N/A)* – Denominator Exceptions ( $c^1 + c^2 + c^3 = 2$  patients)

= **75.00%**